

**RESOLUTION
OF
THE BOARD OF DIRECTORS OF
COLLIERS HILL MASTER ASSOCIATION, INC.**

**AMENDING THE DESIGN GUIDELINES AND RULES AND REGULATIONS MANUAL
FOR THE COLLIERS HILL COMMUNITY**

WHEREAS, Colliers Hill Master Association, Inc. (the "Association") is the community association named and referred to in the Declaration of Covenants, Conditions and Restrictions for Colliers Hill, recorded in the real property records of Weld County, Colorado on May 29, 2013, at Reception Number 3935465; and

WHEREAS, the Association has in place that certain Design Guidelines and Rules and Regulations Manual for the Colliers Hill Community, dated July 2014 (the "Design Guidelines"); and

WHEREAS, pursuant Section 5.6 of the Declaration, the Board of Directors of the Association is authorized to adopt and amend the Design Guidelines; and

WHEREAS, the Board of Directors desires to amend the Design Guidelines in relation to the trash cans/receptacles storage requirements on the Lots within the Colliers Hill community; and

NOW, THEREFORE, BE IT RESOLVED BY THE BOARD OF DIRECTORS OF THE ASSOCIATION AS FOLLOWS:

Repeal and Restatement. The first paragraph of the Restrictions on Trash and Materials; Trash Collection of the Design Guidelines on Page 17 is hereby repealed in its entirety and the following is substituted at the first paragraph of the Restrictions on Trash and Materials; Trash Collection of the Design Guidelines on Page 17 of the Design Guidelines:

Trash Containers, Enclosures and Storage Areas. Refuse, garbage, trash, lumber, grass, shrub or tree clippings, plant waste, compost, metal, bulk materials, scrap, refuse or debris of any kind shall be deposited in closed garbage cans or sealed garbage bags and taken to the edge of the street for scheduled collection not more than twelve (12) hours before such collection is scheduled. Emptied cans shall be removed no later than twelve (12) hours after such collection is scheduled. Except when temporarily placed at the edge of the street for scheduled collection, all garbage cans and other refuse containers shall not be maintained in an exposed or unsightly manner. *Trash receptacles shall not be left on any right-of-way sidewalk blocking access for pedestrians.* For homeowners not wanting to store their garbage containers in their garage, suitable pre-approved landscaping may be installed to limit the

exposure of the garbage cans and other refuse containers or a garbage container enclosure may be submitted for approval to the DRC which would be constructed immediately adjacent to the garage. Below is an example of the enclosure size, style, colors that could be considered for approval. Approval for garbage container enclosures will take into consideration, but not be limited to, overall dimensions of the enclosure and placement of the enclosure. Alternative enclosure designs and materials will be considered on a case-by-case basis.



Lifetime 60170 Details

A great way to add a convenient storage solution to your outdoor area, this Lifetime 60170 brown horizontal outdoor shed offers the reliable storage capabilities you need. Designed to withstand an outdoor environment, this shed is ideal for storing outdoor equipment like lawn care equipment, sports equipment, or even pool toys. It is designed to be able to hold two trash cans if you need a place to keep your trash cans out of the elements. The top lid is spring-hinged for easy immediate access. Then the lockable front doors swing open when you need more complete access to its contents.

A durable UV-protected, high-density polyethylene construction ensures long-lasting use. With a large interior capacity, you can store all of your outdoor equipment with ease. Whether you want to store lawn equipment, sports equipment, or trash cans, this shed is the durable, reliable choice.

Overall Dimensions:

Length: 75 3/16"
Width: 42 3/16"
Height: 52"

This item ships via Common Carrier. For more information and tips to help your delivery go smoothly, click [here](#).

LIFETIME 60170 SPECS

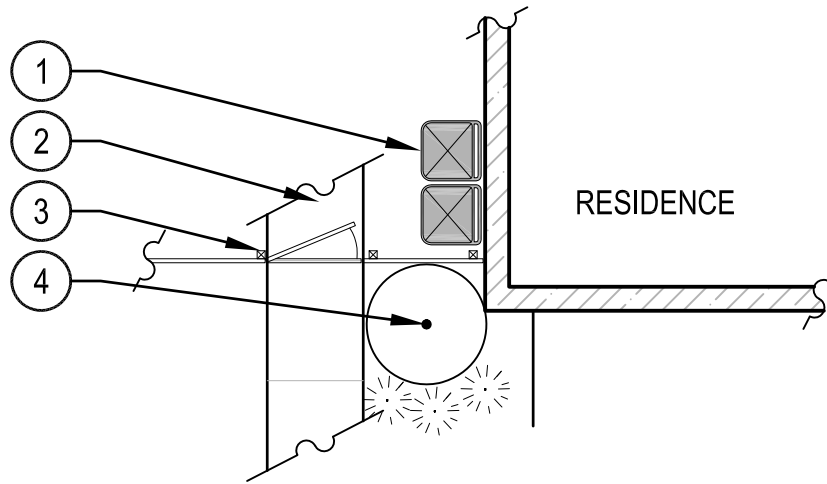
Length	75 3/16 inches
Width	42 3/16 inches
Height	52 inches
Color	Brown
Lid Type	Hinged
Material	Polyethylene
Type	Storage Boxes
Usage	Outdoor

RESOLVED, ADOPTED AND APPROVED this 6th day of March, 2019.

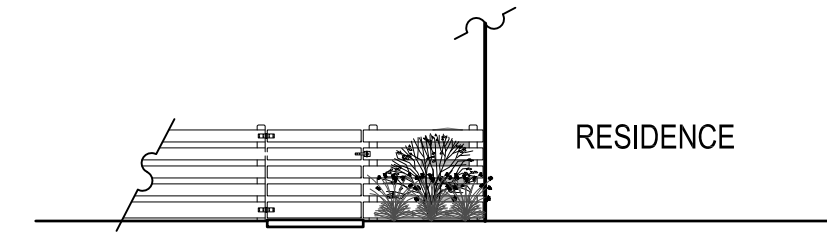
COLLIERS HILL MASTER ASSOCIATION, INC.

By:

Larry Blummond
President



PLAN



ELEVATION

- ① TRASH BINS
- ② CONCRETE WALK
- ③ WOOD FENCE, RE: COLLIERS HILL DESIGN GUIDELINES
- ④ PLANTINGS TO SCREEN TRASH BINS

HOA APPROVED PLANT LIST			
	COMMON NAME	BOTANICAL NAME	CONTAINER SIZE
SHRUBS			
	AUTUMN BRILLIANCE SERVICEBERRY	AMELANCHIER X GRANDIFLORA	#5
	ROSE-OF-SHARON VAR. MINERVA	HIBISCUS SYRIACUS	#5
	COMMON PURPLE LILAC	SYRINGA VULGARIS	#5
	SMOOTH CUTLEAF SUMAC	RHUS GLABRA 'LACINIATA'	#5
	GOLDEN ELDER	SAMBUCUS CANADENSIS 'AUREA'	#5
	PURPLE SMOKE TREE (SHRUB)	COTINUS COGGYGRIA	#5
	WAYFARING VIBURNUM	VIBURNUM LANTANA	#5
	APACHE PLUME	FALLUGIA PARADOXA	#5
	IVORY HALO DOGWOOD	CORNUS ALBA 'BAIL HALO'	#5
	FLOWERING ALMOND	PRUNUS GLANDULOSA 'ROSEA'	#5
	MOCKORANGE, CHEYENNE	PHILADELPHUS LEWISII 'CHEYENNE'	#5
	ROCK MOUNTAIN SUMAC	RHUS GLABRA CISMONTANA'	#5
	TALL WESTERN SAGE	ARTEMISIA TRIDENTATA	#5
	BLUE POINT JUNIPER	JUNIPERUS CHINENSIS 'BLUE POINT'	#5
	SEA GREEN JUNIPER	JUNIPERUS X MEDIA 'SEA GREEN'	#5
	SPANISH GOLD BROOM	CYTISUS PURGANS 'SPANISH GOLD'	#5
SILVER GRAY GLEAM JUNIPER	JUNIPERUS SCOPULORUM 'GRAY GLEAM'	#5	
GRASSES			
	BLUE FESCUE GRASS	FESTUCA GLAUCA 'ELIJAH BLUE'	#1
	BLONDE FESCUE GRASS	BOUTELOUA GRACILLIS 'BLONDE'	#1
	THE BLUES LITTLE BLUESTEM GRASS	SCHIZACHYRIUM SCOPARIUM 'THE BLUES'	#1
	KARL FOERSTER FEATHER REED GRASS	CALAMAGROSTIS X ACUTIFLORA 'KARL FOERSTER'	#1

NOTES:

1. REFER TO COLLIERS HILL DESIGN GUIDELINES FOR FENCE SPECIFICATIONS.
2. PLANTS SELECTED FROM THIS LIST DO NOT NEED APPROVAL FROM HOA.

COLLIERS HILL TRASH SCREENING