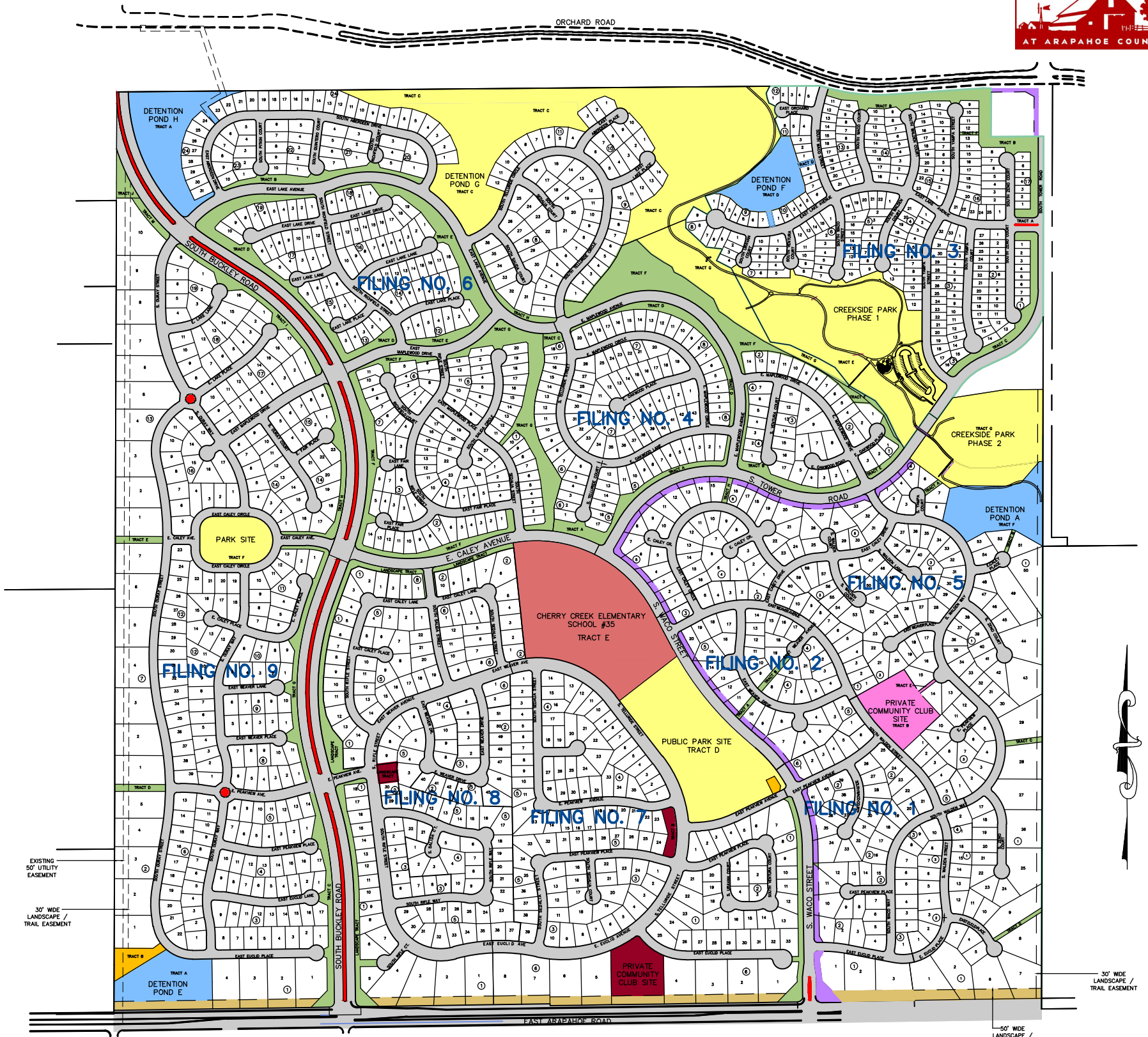


The Farm at Arapahoe County

Ownership and Maintenance Responsibility Map



OWNERSHIP & MAINTENANCE RESPONSIBILITY LEGEND

- | | |
|--|---|
| OWNED & MAINTAINED BY ARAPAHOE COUNTY | OWNED AND MAINTAINED BY SOUTHEAST METRO STORMWATER AUTHORITY (SEMSWA) |
| OWNED & MAINTAINED BY THE FARM AT ARAPAHOE COUNTY HOMEOWNER'S ASSOCIATION | LANDSCAPE, SIDEWALK & PEDESTRIAN ACCESS EASEMENT; MAINTAINED BY GOODMAN METROPOLITAN DISTRICT |
| OWNED & MAINTAINED BY EAST CHERRY CREEK VALLEY WATER AND SANITATION DISTRICT | LANDSCAPE, SIDEWALK & PEDESTRIAN ACCESS EASEMENT; MAINTAINED BY THE FARM AT ARAPAHOE COUNTY HOMEOWNER'S ASSOCIATION |
| OWNED & MAINTAINED BY GOODMAN METROPOLITAN DISTRICT | OWNED BY ARAPAHOE COUNTY; MAINTAINED BY THE FARM AT ARAPAHOE COUNTY HOMEOWNER'S ASSOCIATION |
| OWNED & MAINTAINED BY HILLCREST HOMEOWNER SUB-ASSOCIATION | |
| OWNED & MAINTAINED BY HOMESTEAD HOMEOWNER SUB-ASSOCIATION | |
| OWNED & MAINTAINED BY CHERRY CREEK SCHOOL DISTRICT | |

PROFESSIONAL COMMUNITY MANAGEMENT SERVICES
7208 S. TUCSON WAY, SUITE 125
CENTENNIAL, COLORADO 80112